

MBU60 series

63W Open Frame Type
Medical Power Supplies

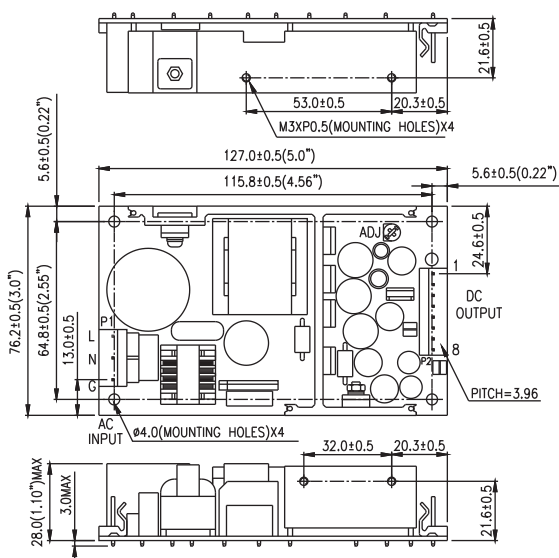
Output Voltage And Current Rating Chart (Single Output) :

Model Number	Output Voltage	Output Current	Total Regulation	Max. Output Power	Pno (max.)
MBU60-101	3 ~ 5 VDC	16.66 ~ 10.0 A	5%	50W	3W
MBU60-102	5 ~ 6 VDC	11.00 ~ 9.16 A	5%	55W	3W
MBU60-103	6 ~ 8 VDC	10.00 ~ 7.50 A	5%	60W	3W
MBU60-104	8 ~ 11 VDC	7.87 ~ 5.72 A	3%	63W	3W
MBU60-105	11 ~ 13 VDC	5.72 ~ 4.84 A	3%	63W	4W
MBU60-105-1	11 ~ 13 VDC	4.09 ~ 3.46 A	3%	45W	4W
MBU60-106	13 ~ 16 VDC	4.84 ~ 3.93 A	3%	63W	4W
MBU60-107	16 ~ 21 VDC	3.93 ~ 3.00 A	3%	63W	4W
MBU60-108	21 ~ 27 VDC	3.00 ~ 2.33 A	2%	63W	5W
MBU60-109	27 ~ 33 VDC	2.33 ~ 1.90 A	2%	63W	5W
MBU60-110	33 ~ 40 VDC	1.90 ~ 1.57 A	2%	63W	6W

Output Voltage And Current Rating Chart (Multi Output) :

Model Number	Output #1				Output #2				Output #3				Output #4				Max. Output Power	Pno (max.)
	Vonom	Iomax	Iomin	Regmax	Vonom	Iomax	Iomin	Regmax	Vonom	Iomax	Iomin	Regmax	Vonom	Iomax	Iomin	Regmax		
MBU60-200	+3.3V	1.4A	7A	6%	+12V	0.6A	3A	5%									59.1W	4W
MBU60-201	+5V	0.7A	7A	5%	+12V	0.3A	3A	5%									63W	4W
MBU60-202	+5V	0.7A	7A	5%	+15V	0.3A	3A	5%									63W	4W
MBU60-203	+5V	0.7A	7A	5%	+24V	0.4A	2A	5%									63W	4W
MBU60-204	+3.3V	1.4A	7A	6%	+5V	0.5A	5A	5%									48.1W	3W
MBU60-215	+5V	0.7A	7A	5%					-24V	0.2A	2A	5%					63W	4W
MBU60-300	+3.3V	1.2A	6A	6%	+12V	0.6A	3A	5%	-12V	0A	0.8A	5%					63W	4W
MBU60-300-1	+3.3V	1.2A	6A	6%	+12V	0.6A	3A	5%	+12V	0A	0.8A	5%					63W	4W
MBU60-301	+5V	0.6A	6A	5%	+12V	0.3A	3A	5%	-5V	0A	0.8A	5%					63W	4W
MBU60-301-1	+5V	0.6A	6A	5%	+12V	0.3A	3A	5%	+5V	0A	0.8A	5%					63W	4W
MBU60-302	+5V	0.6A	6A	5%	+12V	0.6A	3A	5%	-12V	0A	0.8A	5%					63W	4W
MBU60-302-1	+5V	0.6A	6A	5%	+12V	0.6A	3A	5%	+12V	0A	0.8A	5%					63W	4W
MBU60-303	+5V	0.6A	6A	5%	+15V	0.3A	3A	5%	-15V	0A	0.8A	5%					63W	4W
MBU60-303-1	+5V	0.6A	6A	5%	+15V	0.3A	3A	5%	+15V	0A	0.8A	5%					63W	4W
MBU60-305	+5V	1.2A	6A	5%	+24V	0.4A	2A	5%	-12V	0A	0.8A	5%					63W	5W
MBU60-305-1	+5V	1.2A	6A	5%	+24V	0.4A	2A	5%	+12V	0A	0.8A	5%					63W	5W
MBU60-306	+3.3V	1.2A	6A	6%	+12V	0.6A	3A	5%	-5V	0A	0.8A	5%					59.8W	4W
MBU60-306-1	+3.3V	1.2A	6A	6%	+12V	0.6A	3A	5%	+5V	0A	0.8A	5%					59.8W	4W
MBU60-308	+3.3V	0.5A	5A	6%	+5V	0.5A	5A	5%	-12V	0A	1A	5%					53.5W	3W
MBU60-308-1	+3.3V	0.5A	5A	6%	+5V	0.5A	5A	5%	+12V	0A	1A	5%					53.5W	3W
MBU60-400	+3.3V	1.2A	6A	6%	+12V	0.6A	3A	5%	-12V	0A	0.8A	5%	-5V	0A	0.8A	5%	63W	4W
MBU60-400-1	+3.3V	1.2A	6A	6%	+12V	0.6A	3A	5%	-12V	0A	0.8A	5%	+5V	0A	0.8A	5%	63W	4W
MBU60-400-2	+3.3V	1.2A	6A	6%	+12V	0.6A	3A	5%	+12V	0A	0.8A	5%	-5V	0A	0.8A	5%	63W	4W
MBU60-400-3	+3.3V	1.2A	6A	6%	+12V	0.6A	3A	5%	+12V	0A	0.8A	5%	+5V	0A	0.8A	5%	63W	4W
MBU60-401	+5V	0.6A	6A	5%	+12V	0.3A	3A	5%	-12V	0A	0.8A	5%	-5V	0A	0.8A	5%	63W	4W
MBU60-401-1	+5V	0.6A	6A	5%	+12V	0.3A	3A	5%	-12V	0A	0.8A	5%	+5V	0A	0.8A	5%	63W	4W
MBU60-401-2	+5V	0.6A	6A	5%	+12V	0.3A	3A	5%	+12V	0A	0.8A	5%	-5V	0A	0.8A	5%	63W	4W
MBU60-401-3	+5V	0.6A	6A	5%	+12V	0.3A	3A	5%	+12V	0A	0.8A	5%	+5V	0A	0.8A	5%	63W	4W
MBU60-402	+5V	1.2A	6A	5%	+12V	0.6A	3A	5%	-12V	0A	0.8A	5%	-12V	0A	0.8A	5%	63W	4W
MBU60-402-1	+5V	1.2A	6A	5%	+12V	0.6A	3A	5%	-12V	0A	0.8A	5%	+12V	0A	0.8A	5%	63W	4W
MBU60-402-2	+5V	1.2A	6A	5%	+12V	0.6A	3A	5%	+12V	0A	0.8A	5%	-12V	0A	0.8A	5%	63W	4W
MBU60-402-3	+5V	1.2A	6A	5%	+12V	0.6A	3A	5%	+12V	0A	0.8A	5%	+12V	0A	0.8A	5%	63W	4W
MBU60-403	+5V	1.2A	6A	5%	+12V	0.6A	3A	5%	-12V	0A	0.8A	5%	-24V	0A	0.8A	5%	63W	4W
MBU60-403-1	+5V	1.2A	6A	5%	+12V	0.6A	3A	5%	-12V	0A	0.8A	5%	+24V	0A	0.8A	5%	63W	4W
MBU60-403-2	+5V	1.2A	6A	5%	+12V	0.6A	3A	5%	+12V	0A	0.8A	5%	-24V	0A	0.8A	5%	63W	4W
MBU60-403-3	+5V	1.2A	6A	5%	+12V	0.6A	3A	5%	+12V	0A	0.8A	5%	+24V	0A	0.8A	5%	63W	4W
MBU60-404	+5V	0.6A	6A	5%	+15V	0.3A	3A	5%	-15V	0A	0.8A	5%	-5V	0A	0.8A	5%	63W	4W
MBU60-404-1	+5V	0.6A	6A	5%	+15V	0.3A	3A	5%	-15V	0A	0.8A	5%	+5V	0A	0.8A	5%	63W	4W
MBU60-404-2	+5V	0.6A	6A	5%	+15V	0.3A	3A	5%	+15V	0A	0.8A	5%	-5V	0A	0.8A	5%	63W	4W
MBU60-404-3	+5V	0.6A	6A	5%	+15V	0.3A	3A	5%	+15V	0A	0.8A	5%	+5V	0A	0.8A	5%	63W	4W

Mechanical Specifications :

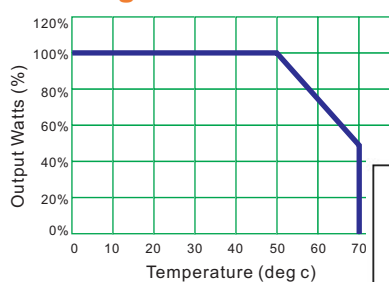


PIN CHART

PIN MODEL	1	2	3	4	5	6	7	8 (Optional)
MBU60-1XX	OUT	OUT	OUT	RTN	RTN	RTN	RTN	PFD
MBU60-2XX	Vo2	Vo1	Vo1	COM	COM	N/C	N/C	PFD
MBU60-215	N/C	Vo1	Vo1	COM	COM	Vo3	N/C	PFD
MBU60-3XX	Vo2	Vo1	Vo1	COM	COM	Vo3	N/C	PFD
MBU60-4XX	Vo2	Vo1	Vo1	COM	COM	Vo3	Vo4	PFD

Note: Vo1:Output#1 Vo2:Output#2 Vo3:Output#3 Vo4:Output#4

Derating Curve :



1. Operating Temperature: 0 to 70°C
 2. Derate linearly from 100% load at 50°C to 50%

Note:
 1. Dimensions are shown in inches or mm.
 2. Weight: 300gs approx.
 3. Input connector mates with Molex housing 09-50-3051 and Molex 2478 series crimp terminal.
 4. Output connector mates with Molex housing no. 50-3081 and Molex 2478 series crimp terminal.

North America Office:
L.Q.P. Enterprises Co., LTD.
 175-5489 Byrne Road,
 Burnaby, B.C. V5J 3J1 Canada
 TEL: (604)451-7899 FAX: (604)451-7858
 www.LeadingQP.com, www.LQP.ca