

### 150W Open Frame Switching Power Supplies For I.T.E.

#### Description:

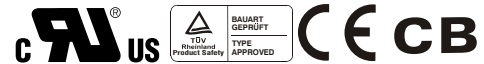
The SBU150 series of compact, open frame constructed, AC/DC switching mode power supplies provide 150 Watts of continuous output power. They are ideally suited for use in CRT terminals, disc drive systems, microprocess or based systems, portable equipments and many other applications. All models meet FCC Part-15 class B and CISPR-22 class B emission Limits and are designed to comply with UL/c-UL (UL 60950-1), TUV/Bauart (EN 60950-1) and new CE requirements. All units are 100% burned in and tested.



#### Features:

- Wide Input Voltage 90 to 264 VAC, 47 to 63 Hz
- Internal EMI filter
- Single Output
- Input connector mates with Molex housing 09-50-3051 and Molex 2478 series crimp terminal
- Output connector mates with Molex housing 09-50-3131 and Molex 2478 series crimp terminal
- Output Voltage Available From 9 VDC Thru 48 VDC
- Input Surge Current, Over Voltage and Over Load protection
- Power Factor Correction
- Power Fail Detect (Optional)
- Class I Insulation
- Synchronous Rectification
- Two Years Warranty

#### Safety Approvals :



#### Electrical Characteristics:

Sym.	Parameter	Test Conditions	Min.	Typ.	Max.	Unit
Vin	Input Voltage	Operating Voltage	90		264	VAC
Fin	Input Frequency		47		63	Hz
PFC	Power Factor Correction	Io=Full load, Vin=90~260VAC	0.95	0.97	1.0	
Wo	Output Power Range	Vin=90 to 264 VAC	0		150	W
Vo	Output Voltage Range		See rating Chart			V
Io	Output Current Range		See rating Chart			A
Iil	Input Current (Low Line)	Io=Full load, Vin=115VAC			2.0	A
Iih	Input Current (High Line)	Io=Full load, Vin=230VAC			0.7	A
Irl	Low Line Inrush Current	Io=Full load, 25°C, Cool start, Vin=115VAC		12	15	A
Irh	High Line Inrush Current	Io=Full load, 25°C, Cool start, Vin=230VAC		26	30	A
Eff	Efficiency	Io=Full load, Vin=230VAC	80	85	90	%
REG-i	Line Regulation	Io=Full load		0.5	1	%
REG-o	Load Regulation	Vin=230VAC		3	5	%
OVP	Over Voltage Protection		112		132	%
OCP	Over Current Protection		110		150	%
Ttr	Transient Response	Io=Full load to Half Load, Vin=100VAC			4	mS
Thold	Hold-Up Time	Io=Full load, Vin=110VAC	16	18	20	mS
Ts	Start Up Time	Io=Full load, Vin=100VAC	0.3	1	2	S
Vp-p	Ripple & Noise (Peak to Peak)	Full load, Vin=90VAC		1	2	%
Ilk	Safety Ground Leakage Current	Io=Full load, Vin=240VAC		0.4	0.45	mA
Tc	Temperature Coefficient	All output	-0.04		0.04	%/°C

#### Environmental :

Sym.	Parameter	Test Conditions	Min.	Typ.	Max.	Unit
Toper	Operating Temperature		0		70	°C
Tstg	Storage Temperature		-40		85	°C
Hr	Relative Humidity		5		95	%
Pd	Derate linearly from 100% load at 50°C to 50% load at 70°C					

# SBU150 SERIES

## 150W Open Frame Switching Power Supplies For I.T.E.

### Safety Specifications:

Sym.	Parameter	Test Conditions	Min.	Typ.	Max.	Unit
Vps	Dielectric Withstanding Voltage for Primary to secondary	Primary to secondary	4242			VDC
Vpg	Dielectric Withstanding Voltage for Primary to Ground	Primary to ground	2121			VDC
Ri	Isolation Resistance	Test Voltage=500VDC	50			MΩ
CISPR	EMI requirements for CISPR-22	Vin=220VAC	B			CLASS
FCC	EMI requirements for FCC PART-15	Vin=110VAC	B			CLASS

### Output Voltage And Current Rating Chart (Single Output) :

Model Number	Output Voltage	Output Current	Total Regulation	Maximum Output Power
SBU150-104	9 VDC	16.0 A	5%	144W
SBU150-105	12 VDC	12.5 A	5%	150W
SBU150-106	15 VDC	10.0 A	5%	150W
SBU150-107	18 VDC	8.33 A	4%	150W
SBU150-108	24 VDC	6.25 A	3%	150W
SBU150-109	30 VDC	5.00 A	2%	150W
SBU150-110	36 VDC	4.17 A	2%	150W
SBU150-111	48 VDC	3.13 A	2%	150W

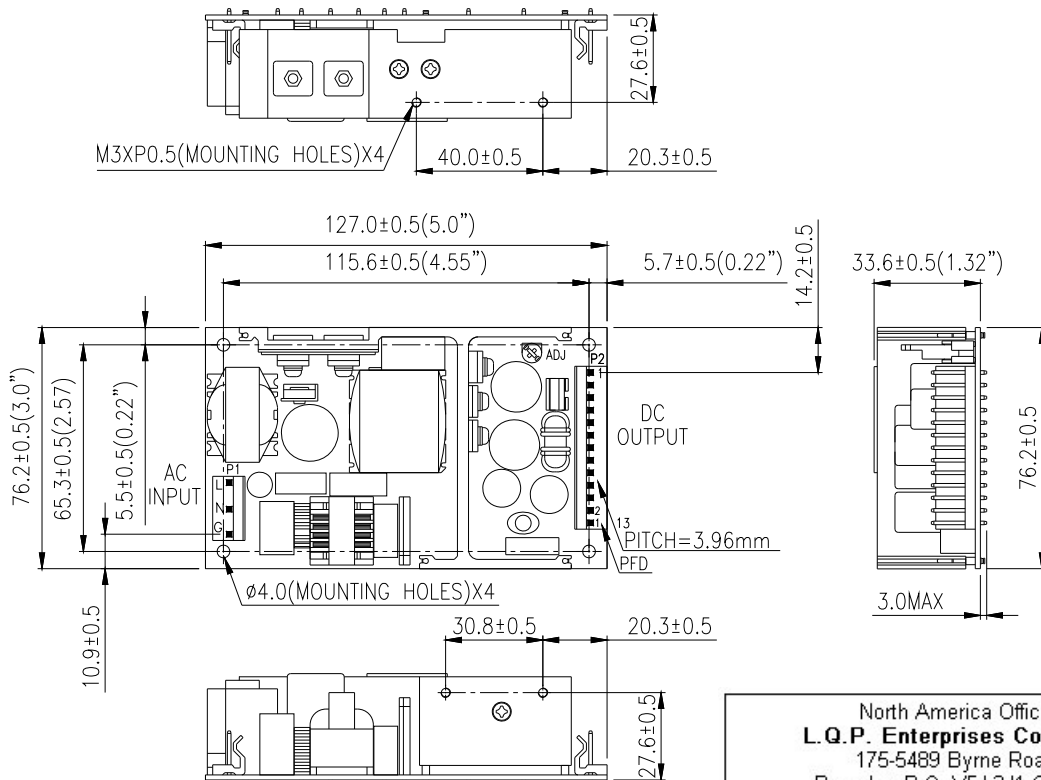
### PIN CHART

PIN	1	2	3	4	5	6	7	8	9	10	11	12	13 (Optional)
MODEL	OUT	OUT	OUT	OUT	OUT	OUT	RTN	RTN	RTN	RTN	RTN	RTN	PFD
SBU150-1XX	OUT	OUT	OUT	OUT	OUT	OUT	RTN	RTN	RTN	RTN	RTN	RTN	PFD

### Note:

1. Dimensions are shown in inches or mm .
2. Weight: 390gs approx.
3. Input connector mates with Molex housing 09-50-3051 and Molex 2478 series crimp terminal.
4. Output connector mates with Molex housing 09-50-3131 And Molex 2478 series crimp terminal.

### Mechanical Specifications :



North America Office:  
**L.Q.P. Enterprises Co., LTD.**  
 175-5489 Byrne Road,  
 Burnaby, B.C. V5J 3J1 Canada  
 TEL: (604)451-7899 FAX: (604)451-7858  
 www.LeadingQP.com, www.LQP.ca